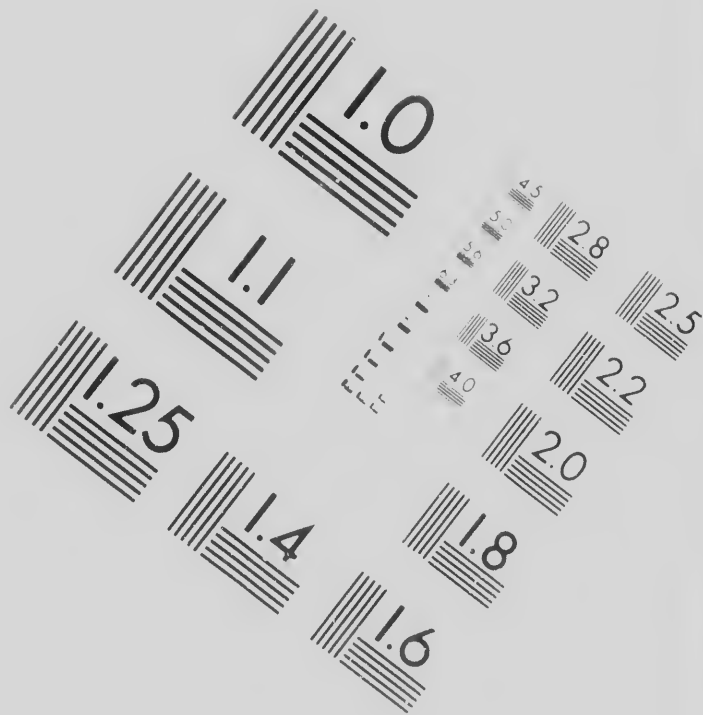


IMAC  
TEST



**IMAGE EVALUATION  
TEST TARGET (MT-3)**



**CIHM/ICMH  
Microfiche  
Series.**

**CIHM/ICMH  
Collection de  
microfiches.**



Technical and Bibliographic Notes/Notes techniques

The Institute has attempted to obtain the best original copy available for filming. Features of this copy which may be bibliographically unique, which may alter any of the images in the reproduction, or which may significantly change the usual method of filming, are checked below.

- Coloured covers/  
Couverture de couleur
- Covers damaged/  
Couverture endommagée
- Covers restored and/or laminated/  
Couverture restaurée et/ou pelliculée
- Cover title missing/  
Le titre de couverture manque
- Coloured maps/  
Cartes géographiques en couleur
- Coloured ink (i.e. other than blue or black)/  
Encre de couleur (i.e. autre que bleue ou noire)
- Coloured plates and/or illustrations/  
Planches et/ou illustrations en couleur
- Bound with other material/  
Relié avec d'autres documents

L'I  
qu  
de  
po  
un  
me  
so

es techniques et bibliographiques

L'Institut a microfilmé le meilleur exemplaire qu'il lui a été possible de se procurer. Les détails de cet exemplaire qui sont peut-être uniques du point de vue bibliographique, qui peuvent modifier une image reproduite, ou qui peuvent exiger une modification dans la méthode normale de filmage sont indiqués ci-dessous.

- Coloured pages/  
Pages de couleur
- Pages damaged/  
Pages endommagées
- Pages restored and/or laminated/  
Pages restaurées et/ou pelliculées
- Pages discoloured, stained or foxed/  
Pages décolorées, tachetées ou piquées
- Pages detached/  
Pages détachées
- Showthrough/  
Transparence
- Quality of print varies/  
Qualité inégale de l'impression
- Includes supplementary material/  
Comprend du matériel supplémentaire

The copy filmed here has  
to the generosity of:

Library of  
Photodupli

The images appearing here  
possible considering the c  
of the original copy and in  
filming contract specificat

Original copies in printed  
beginning with the front o  
the last page with a printe  
sion, or the back cover wh  
other original copies are f  
first page with a printed o  
sion, and ending on the la  
or illustrated impression.

Maps, plates, charts, etc.,  
different reduction ratios.  
entirely included in one ex  
beginning in the upper left  
right and top to bottom.

has been reproduced thanks

y of Congress  
duplication Service

g here are the best quality  
the condition and legibility  
nd in keeping with the  
fications.

ated paper covers are filmed  
ont cover and ending on  
rinted or illustrated impres-  
er when appropriate. All  
are filmed beginning on the  
ted or illustrated impres-  
he last page with a printed  
on.

etc., may be filmed at  
tios. Those too large to be  
ne exposure are filmed  
or left hand corner, left to  
m. as many frames as

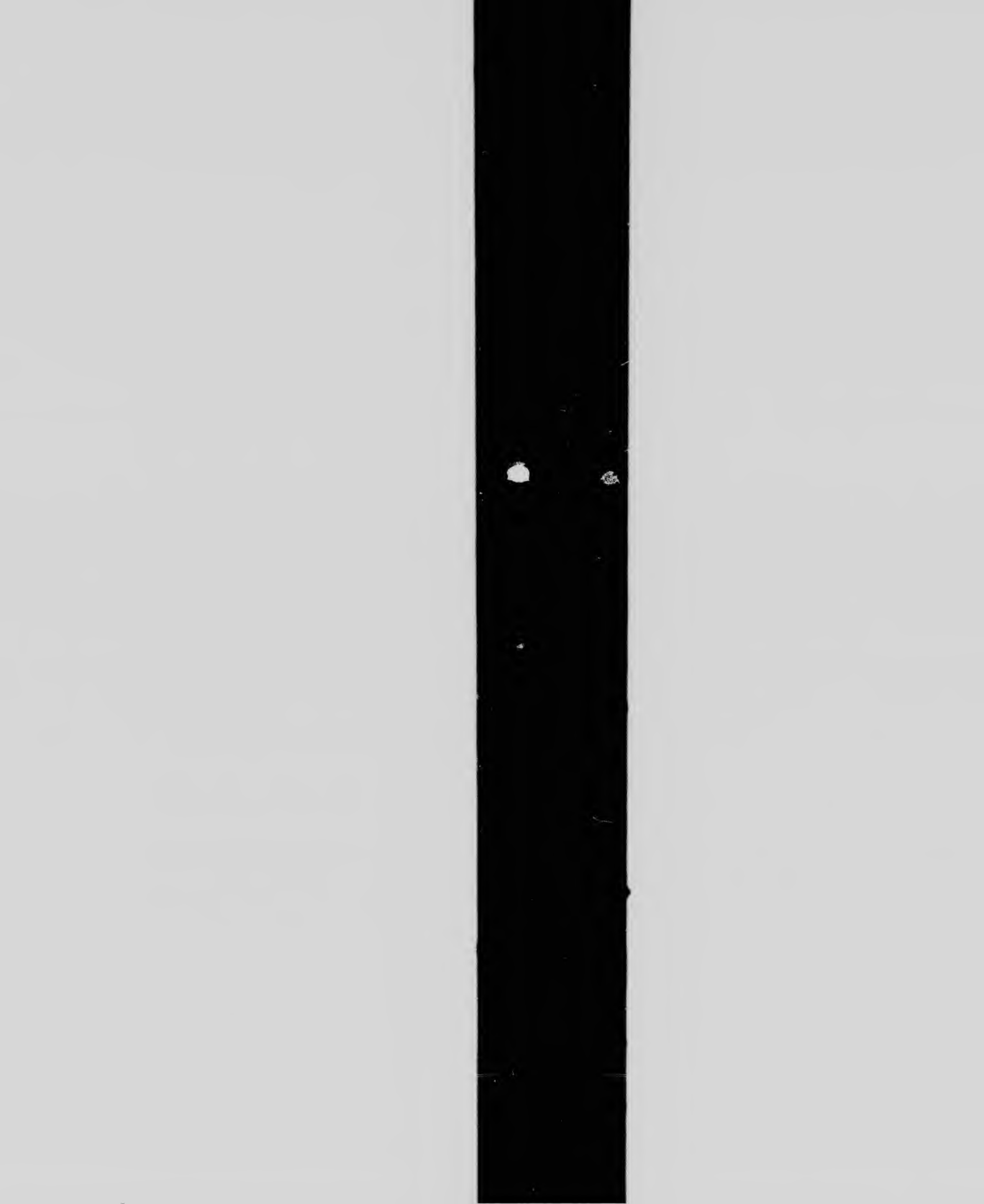
L'exemplaire filmé fut reproduit grâce à la  
générosité de:

Library of Congress  
Photoduplication Service

Les images suivantes ont été reproduites avec le  
plus grand soin, compte tenu de la condition et  
de la netteté de l'exemplaire filmé, et en  
conformité avec les conditions du contrat de  
filmage.

Les exemplaires originaux dont la couverture en  
papier est imprimée sont filmés en commençant  
par le premier plat et en terminant soit par la  
dernière page qui comporte une empreinte  
d'impression ou d'illustration, soit par le second  
plat, selon le cas. Tous les autres exemplaires  
originaux sont filmés en commençant par la  
première page qui comporte une empreinte  
d'impression ou d'illustration et en terminant par  
la dernière page qui comporte une telle  
empreinte.

Les cartes, planches, tableaux, etc., peuvent être  
filmés à des taux de réduction différents.  
Lorsque le document est trop grand pour être  
reproduit en un seul cliché, il est filmé à partir  
de l'angle supérieur gauche, de gauche à droite





**T**

a  
Pa  
to

Ro  
the  
lands

tende  
them

**T**

uel J  
nectio

W

day o  
passe  
tion o  
their

coun  
that t

of the  
in the

an am  
by th

wealth  
ning a

ward o  
line to

faid w  
grees a

i

# The Committee to whom was referred

a Motion of the Delegates of the State of Connecticut, relative to a CESSION of Part of that State's Claim to WESTERN TERRITORY,----beg leave to Report the following Resolution :---

*Resolved*, That Congress in behalf of the United States, are ready to accept all the right, title, interest and claim of the state of Connecticut, to certain western lands described in the form of a deed of cession, in the following words, to wit,

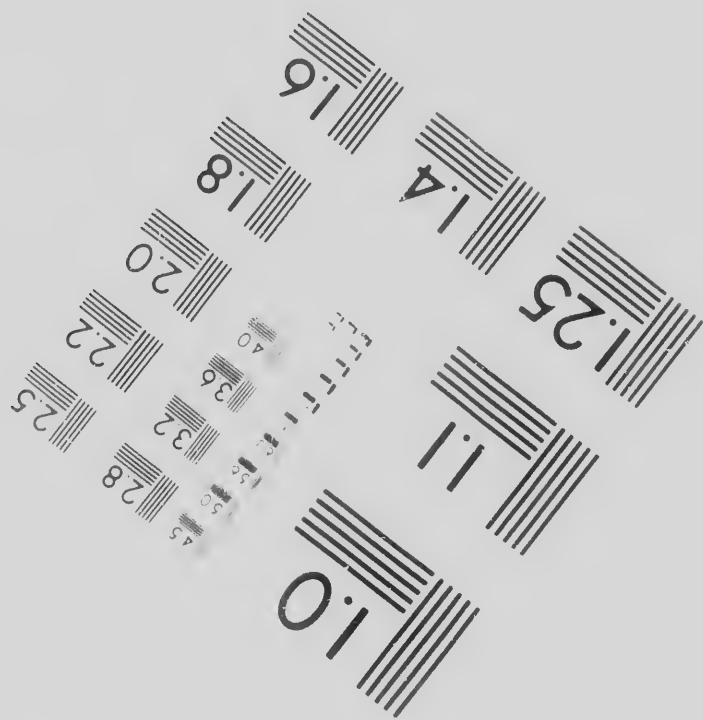
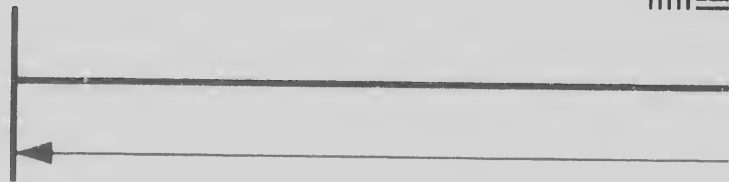
(here insert)

tendered to Congress by the delegates of said state, in pursuance of full powers given them for that purpose, whenever the said delegates shall execute the said deed.

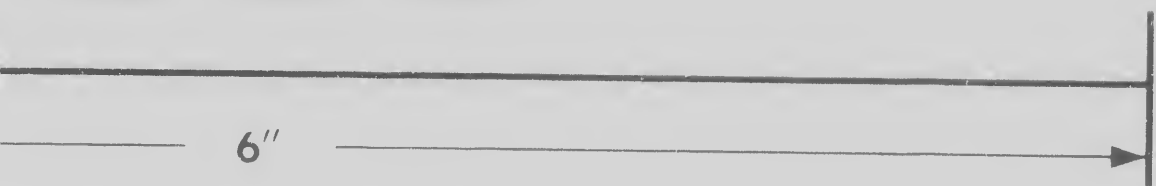
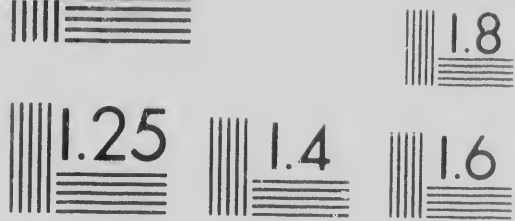
**T**O ALL WHO SHALL SEE THESE PRESENTS, we William Samuel Johnson and Stephen M. Mitchell, the underwritten delegates for the state of Connecticut, in the Congress of the United States of America, send greeting :

WHEREAS the general assembly of the state of Connecticut, on the second Thursday of October, in the year of our Lord, one thousand seven hundred and eighty-five, passed an act, entitled, " an act empowering the delegates of this state, to make cession of the unlocated lands in the western part of the state, to the United States, for their common benefit" in the words following, viz. " Be it enacted by the governor, Council and representatives in general court assembled, and by the authority of the same, that the delegates of this state, or any two of them who shall be attending the Congress of the United States, be, and they are hereby directed, authorized and fully empowered, in the name and behalf of this state, to make and execute under their hands and seals, an ample deed of release and cession of territory, and land belonging to and claimed by this state, situate and being westward of the western boundary line of the commonwealth of Pennsylvania, as now claimed by said commonwealth; that is to say, beginning at the forty first degree of north latitude, one hundred and twenty miles westward of the afore mentioned western boundary line of Pennsylvania, and from thence a line to be drawn northerly parrallel to, and one hundred and twenty miles westward of said west line of Pennsylvania, and to continue northerly until it comes to forty two degrees and two minutes north latitude. All the lands and territory, with the rights, pri-

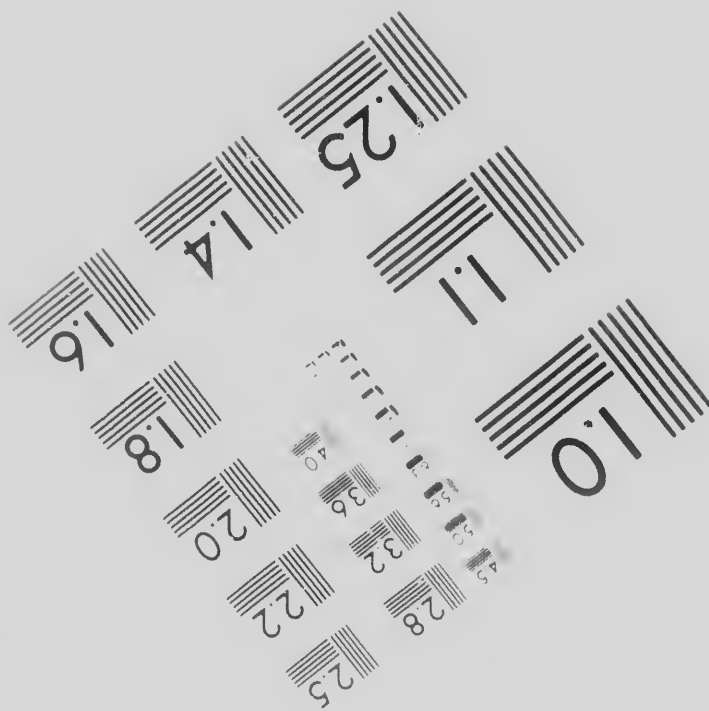




Photogr  
Scien  
Corpor



Canada



ographic  
ences  
oration

23 WEST MAIN STREET  
WEBSTER, N.Y. 14580  
(716) 872-4503





Canadian Institute for Historical Microreproductions / Institut canadien de microreproductions historiques

© 1986

toriques

S

Bound with other material/  
Relié avec d'autres documents

Tight binding may cause shadows or distortion  
along interior margin/  
La reliure serrée peut causer de l'ombre ou de la  
distorsion le long de la marge intérieure

Blank leaves added during restoration may  
appear within the text. Whenever possible, these  
have been omitted from filming/  
Il se peut que certaines pages blanches ajoutées  
lors d'une restauration apparaissent dans le texte,  
mais, lorsque cela était possible, ces pages n'ont  
pas été filmées.

Additional comments: / CIHM no. 60383  
Commentaires supplémentaires.

This item is filmed at the reduction ratio checked below /  
Ce document est filmé au taux de réduction indiqué ci-dessous.

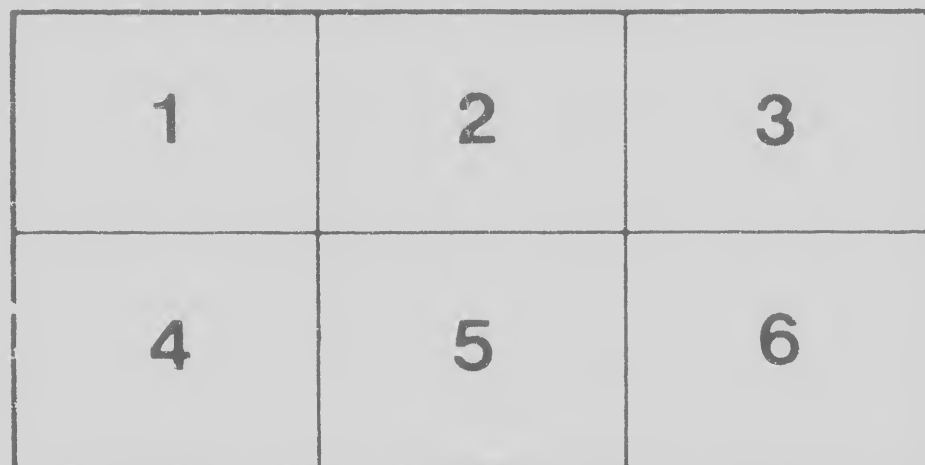
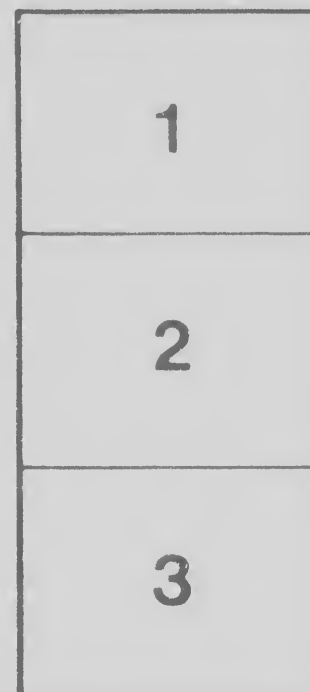
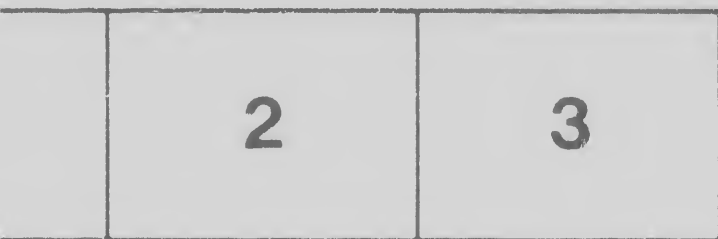
10X				14X				18X						22X
			X											
			12X			16X					20X			

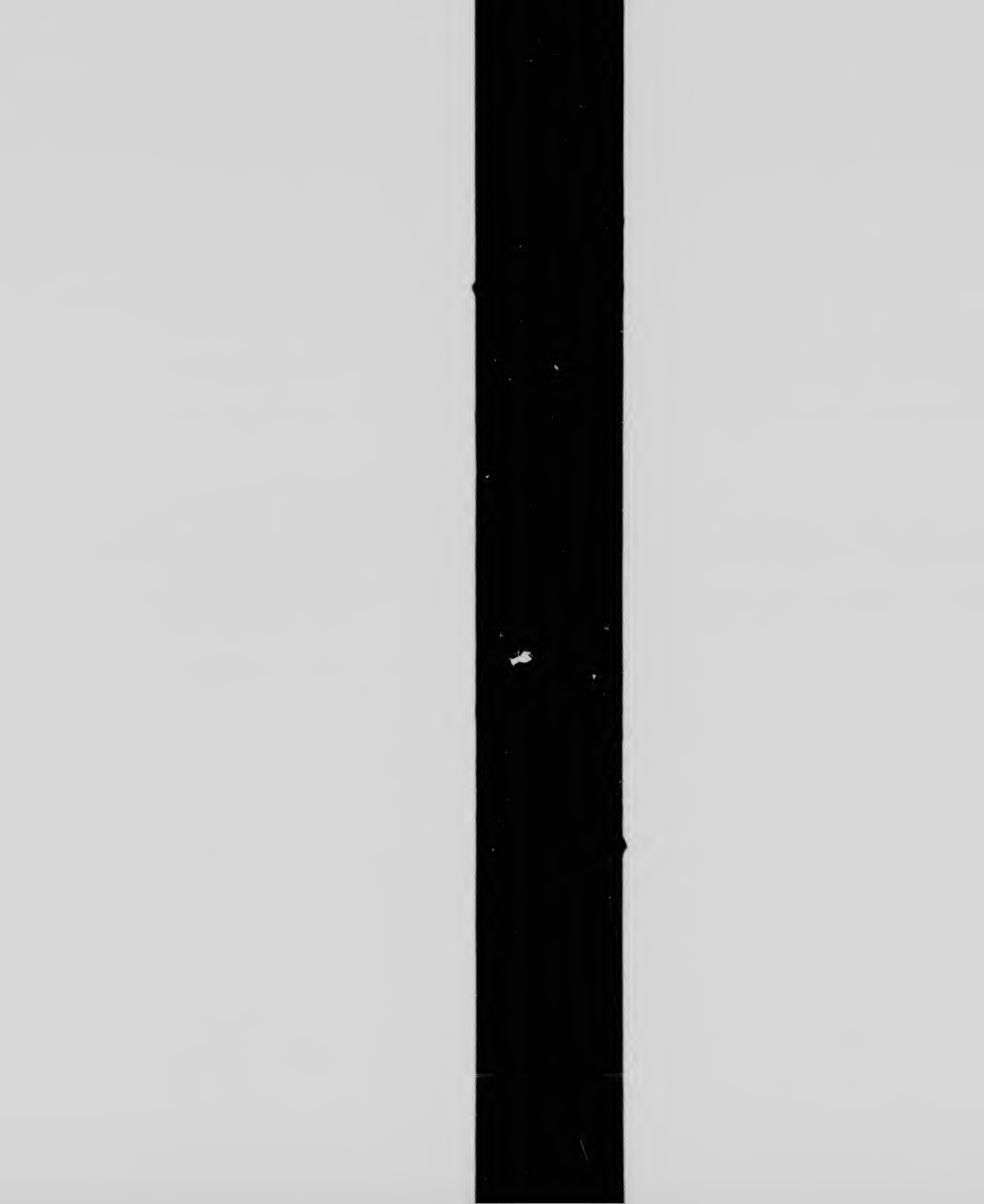




...os. Those too large to be  
...e exposure are filmed  
...r left hand corner, left to  
...m, as many frames as  
...g diagrams illustrate the

filmes à des taux de réduction différents.  
Lorsque le document est trop grand pour être  
reproduit en un seul cliché, il est filmé à partir  
de l'angle supérieur gauche, de gauche à droite,  
et de haut en bas, en prenant le nombre  
d'images nécessaire. Les diagrammes suivants  
illustrent la méthode.





one to  
said w  
grees a  
vilege  
ed line  
United

And  
assemb  
Thurs  
five, v  
of Con  
said st  
vembe  
appoin

NO  
Stephe  
the faic  
name a  
assign,  
benefit  
ritory  
westwa  
latitude  
commo  
thence  
ward o  
forty-t  
the pov  
necticu  
rica, fo  
lands a  
lying a

IN  
our seal  
sand fe  
America



